

Hot Springs

National Park Service
U.S. Department of the Interior



Hot Springs National Park
Arkansas

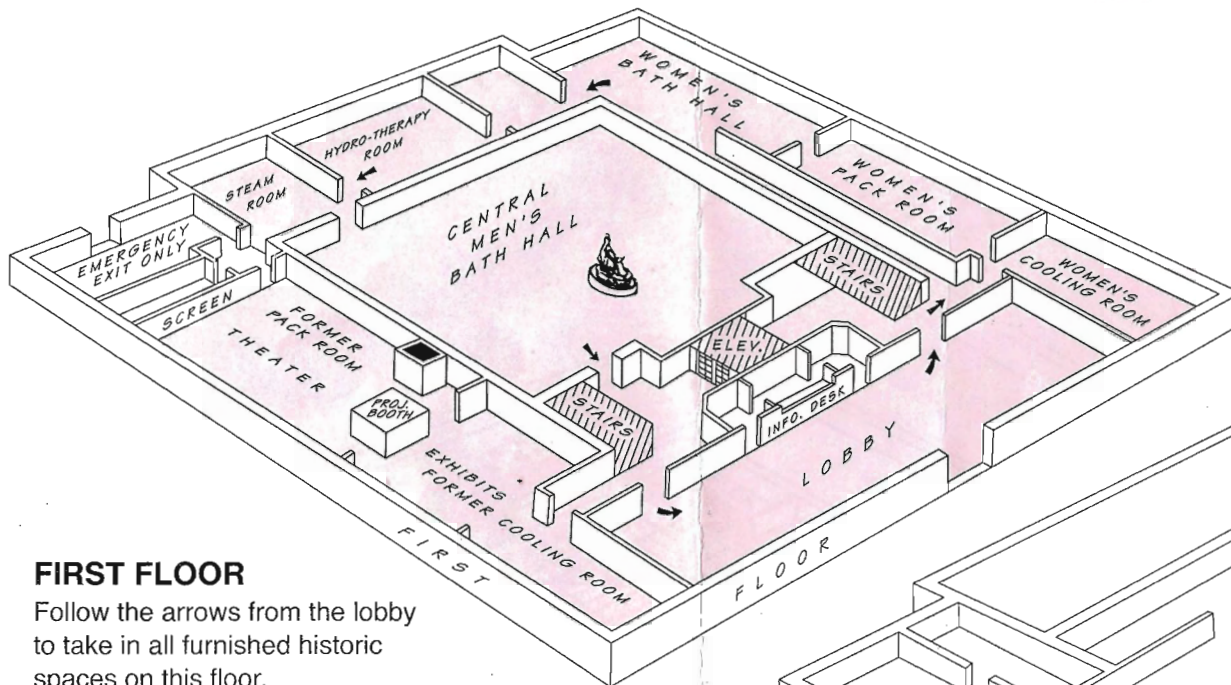
Fordyce Bathhouse First Floor and Basement Guide

Turn page for second and third floors

FOLLOW THE ARROWS →
FOR THE SELF-GUIDING ROUTE
IN HISTORIC SPACES

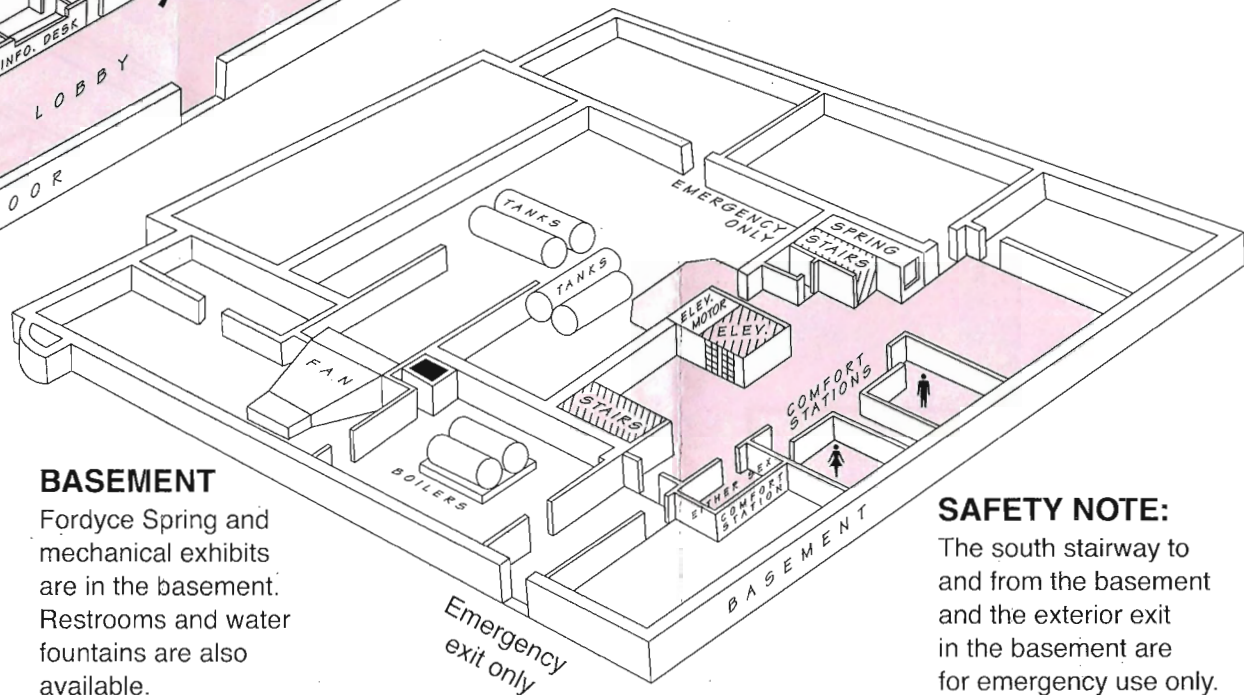
TOUR ROUTES
AND OPEN SPACES 

Hot Springs National Park protects 47 hot springs as its primary resource. Health seekers have long been drinking the water and using it for baths. Established in 1832, this historic federal area also preserves grand bathhouses, hiking trails, and scenic drives as part of an "American Spa."



FIRST FLOOR

Follow the arrows from the lobby to take in all furnished historic spaces on this floor.



BASEMENT

Fordyce Spring and mechanical exhibits are in the basement. Restrooms and water fountains are also available.

Please stay behind the barriers; areas are alarmed on all floors. (Roof garden no longer exists.)

Help us protect this historic building and its furnishings by not smoking, eating or drinking inside.

SAFETY NOTE:

The south stairway to and from the basement and the exterior exit in the basement are for emergency use only.

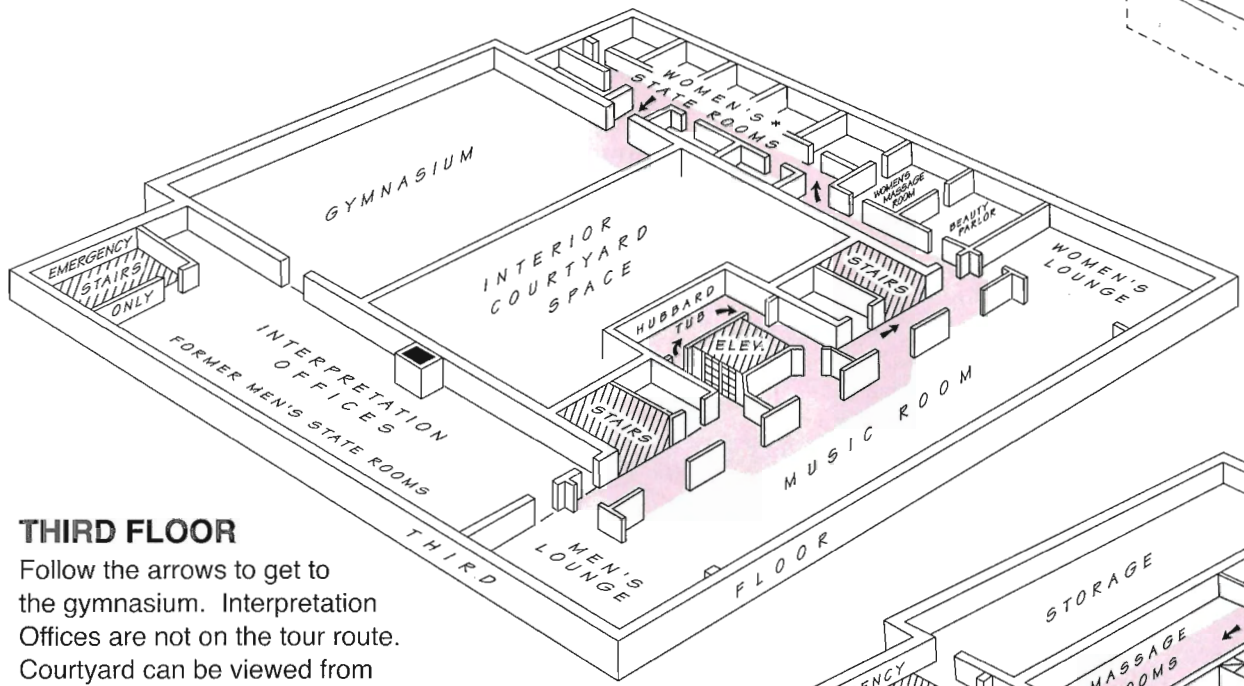
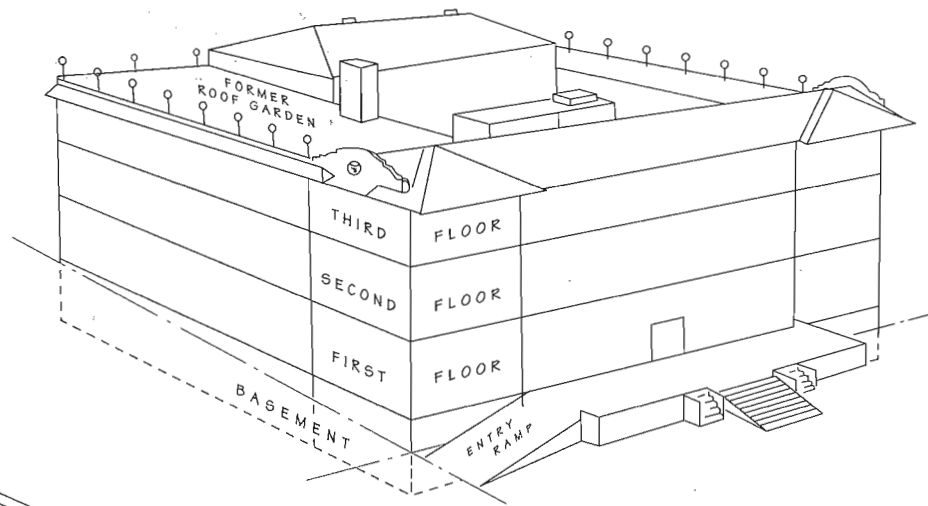
Fordyce Bathhouse

Second and Third Floor Guide

Turn page for first floor and basement

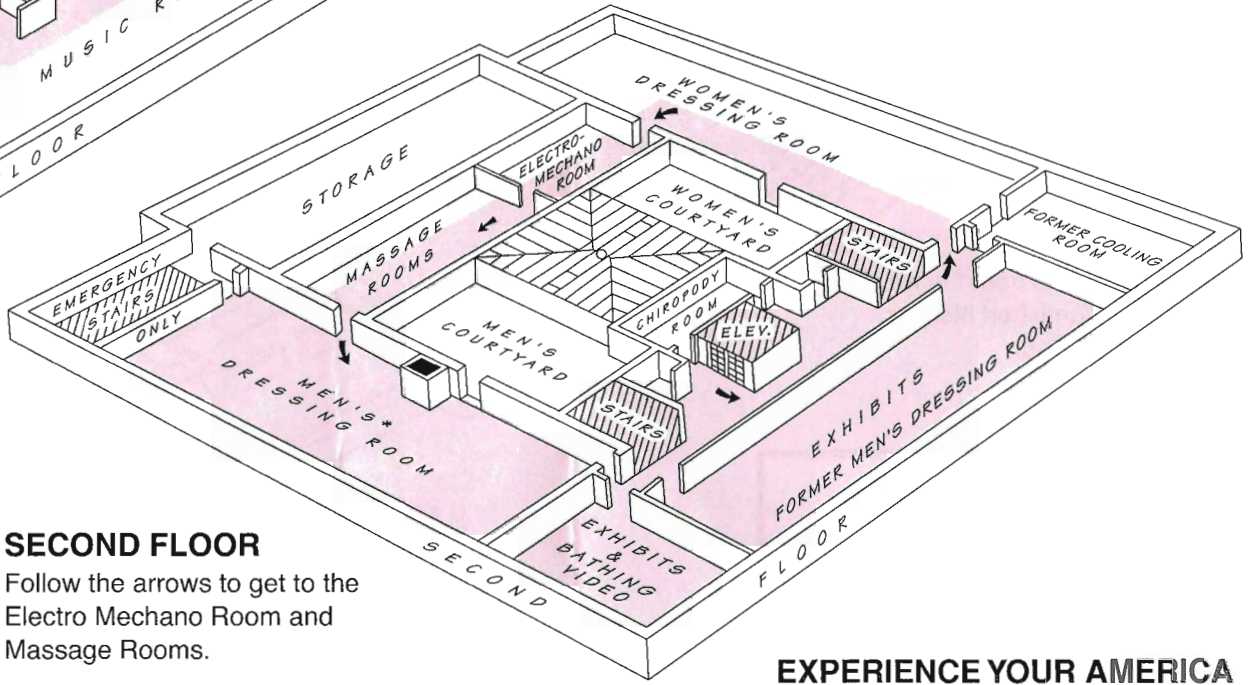
**FOLLOW THE ARROWS →
FOR THE SELF-GUIDING ROUTE
IN HISTORIC SPACES**

**TOUR ROUTES
AND OPEN SPACES** 



THIRD FLOOR

Follow the arrows to get to the gymnasium. Interpretation Offices are not on the tour route. Courtyard can be viewed from the second floor.



SECOND FLOOR

Follow the arrows to get to the Electro Mechano Room and Massage Rooms.

Please stay behind the barriers; areas are alarmed on all floors. (Roof garden no longer exists.)

Help us protect this historic building and its furnishings by not smoking, eating or drinking inside.

* Historic clothing exhibits.